

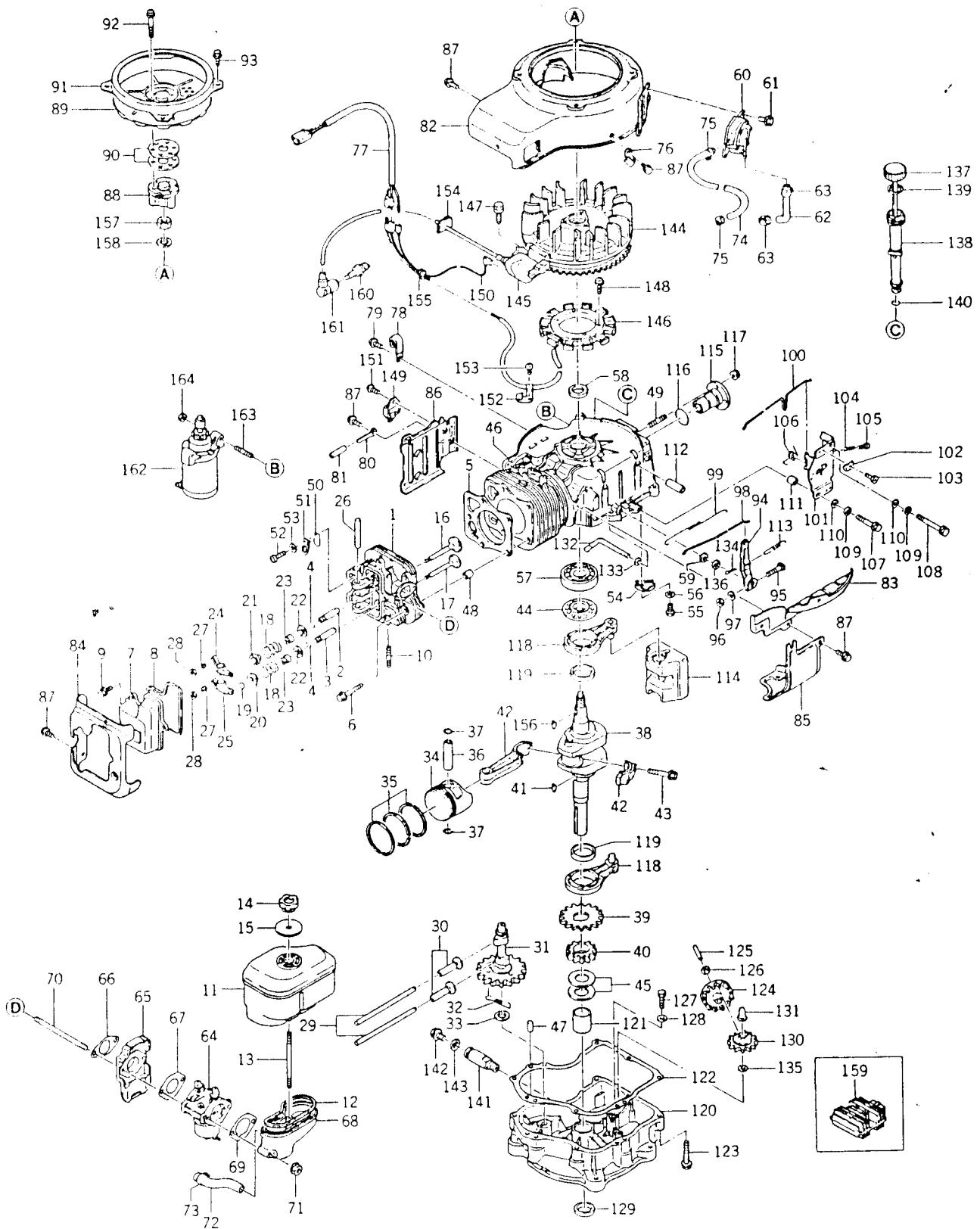


AIR-COOLED ENGINE

FG290V-AS00

Parts Catalog

FC290V-AS00



Ref.No.	Part No.	Part Name	Quantity					Remarks
			A					
1	11008-6002	CYLINDER HEAD COMP	1					
2	49002-2075	•GUIDE, valve (IN)	1					
3	49002-2076	•GUIDE, valve (EX)	1					
4	92036-023	•RING, snap	2					
5	11004-2086	GASKET, head	1					
6	130T0845	BOLT (8x45)	5					
7	11022-2054	CASE, rocker	1					
8	11009-2421	GASKET, rocker case	1					
9	130B0614	BOLT (6x14)	3					
10	171G0816	STUD	2					
11	11010-2248	AIR FILTER ASS'Y	1					Fig. A-1
12	11009-2422	GASKET, air filter	1					
13	171G0690	STUD	1					
14	92015-2138	NUT	1					
15	92022-2204	WASHER	1					
16	12004-2079	VALVE, intake	1					
17	12005-2068	VALVE, exhaust	1					
18	49078-2060	SPRING, valve	2					
19	11012-2189	CAP, valve	1					
20	12009-2058	RETAINER, spring	1					
21	12009-2059	RETAINER, spring	1					
22	16007-2052	SEAT, spring	2					
23	92049-2100	SEAL, oil	2					
24	12016-2055	ARM, rocker	1					
25	12016-2054	ARM, rocker	1					
26	12020-2057	SHAFT, rocker	1					
27	92009-2182	SCREW	2					
28	92015-2139	NUT	2					
29	13116-2054	ROD, push	2					
30	12032-2060	TAPPET	2					
31	49118-2054	CAM SHAFT COMP	1					
32	92081-2297	•SPRING	1					
33	92025-2162	SHIM	AR					t=1.60
	92025-2163	SHIM	AR					t=1.65
	92025-2164	SHIM	AR					t=1.70
	92025-2165	SHIM	AR					t=1.75
	92025-2166	SHIM	AR					t=1.80
	92025-2167	SHIM	AR					t=1.85
	92025-2208	SHIM	AR					t=1.90
34	13001-2089	PISTON	1					S.T.D
	13029-2080	PISTON	AR					O/S 0.25mm
	13029-2081	PISTON	AR					O/S 0.50mm

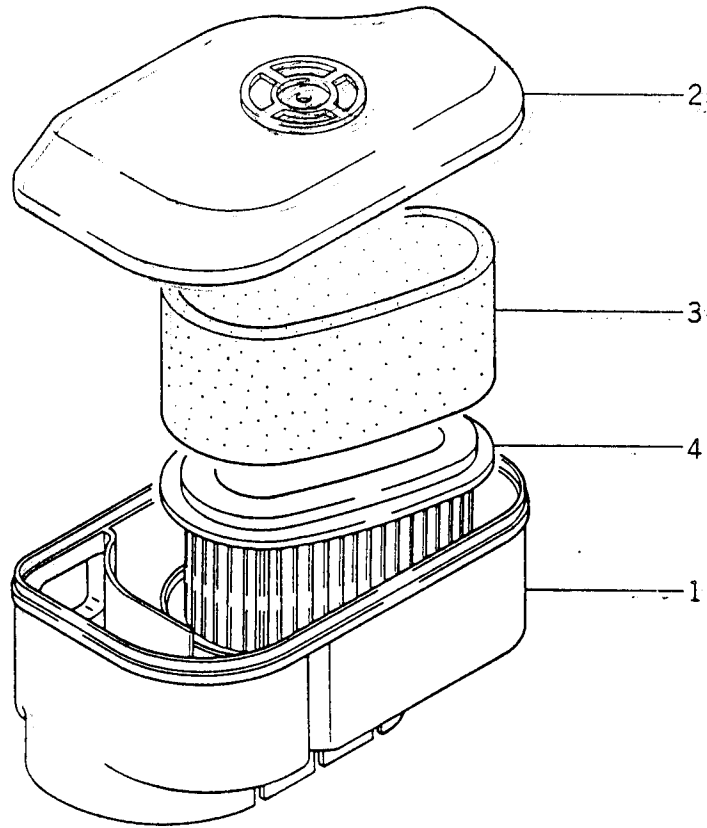
Ref.No.	Part No.	Part Name	Quantity					Remarks
			A					
34	13027-2055	PISTON	AR					O/S 0.75mm
35	13008-6007	PISTON RING SET	1					S.T.D
	13025-2073	PISTON RING SET	AR					O/S 0.25mm
	13025-2074	PISTON RING SET	AR					O/S 0.50mm
	13024-2051	PISTON RING SET	AR					O/S 0.75mm
26	13002-2069	PIN, piston	1					
37	92036-008	RING, snap	2					
38	13037-2269	SHAFT, crank	1					
39	59051-2097	GEAR, spur	1					
40	59056-2088	GEAR, helical	1					
41	92038-2074	KEY	1					
42	13251-6009	CONNECTING ROD ASS'Y	1					S.T.D
	13251-6016	CONNECTING ROD ASS'Y	AR					U/S 0.50mm
43	315601-3245A	•BOLT, connecting rod	2					
44	92026-2052	SPACER	1					
45	92025-2168	SHIM	AR					t=1.13
	92025-2169	SHIM	AR					t=1.18
	92025-2170	SHIM	AR					t=1.23
	92025-2171	SHIM	AR					t=1.28
	92025-2172	SHIM	AR					t=1.33
	92025-2173	SHIM	AR					t=1.38
	92025-2174	SHIM	AR					t=1.43
	92025-2175	SHIM	AR					t=1.48
	92025-2207	SHIM	AR					t=1.53
46	49120-6009	CRANK CASE COMP	1					
47	92043-2111	PIN	2					
48	92043-1037	PIN	2					
49	92004-2083	STUD	4					
50	16126-2107	VALVE	1					
51	13169-2414	PLATE	1					
52	315801-6732A	SCREW	1					
53	410B0500	WASHER	1					
54	18020-2053	BAFFLE	1					
55	112B0510	BOLT (5x10)	1					
56	461F0500A	WASHER, spring	1					
57	601A6306	BEARING, ball (6306)	1					
58	316470-4231-00	SEAL, oil	1					
59	92049-2097	SEAL, oil	1					
60	49040-2054	FUEL PUMP ASS'Y	1					Fig. P-1
61	130B0610	BOLT (6x10)	2					
62	92059-2169	TUBE	1					
63	317196-6812-00	CLIP	2					

Ref. No.	Part No.	Part Name	Quantity					Remarks
			A					
64	15001-2402	CARBURETOR ASS'Y	1					Fig. C-1
65	16073-2095	INSULATOR	1					
66	11009-2423	GASKET	1					
67	11009-2424	GASKET	1					
68	16060-2113	PIPE, intake	1					
69	11009-2425	GASKET	1					
70	92004-2093	STUD	2					
71	92015-1193	NUT	2					
72	92059-2170	TUBE, breather	1					
73	92037-1104	CLAMP	1					
74	705A061000	TUBE, braid	1				$t=255\text{mm}$	
75	317196-6812-00	CLIP	2					
76	92037-2176	CLAMP	1					
77	26001-2113	HARNESS	1					
78	317472-6814A	CLAMP	1					
79	130B0610	BOLT (6x10)	1					
80	313646-8161-00	CLAMP	1					
81	313642-8167-00	TUBE	1					
82	59066-2277-9H	HOUSING, fan	1					
83	59066-2278-9H	HOUSING, fan	1					
84	49089-2188-9H	SHROUD	1					
85	49089-2189-9H	SHROUD	1					
86	49089-2190-9H	SHROUD	1					
87	130G0612	BOLT (6x12)	13					
88	11044-2073	BRACKET	1					
89	14037-2090-9H	SCREEN	1					
90	92025-2176	SHIM	AR				$t=1.2$	
91	55020-2059	GUARD	1					
92	224B0645	SCREW (6x45)	3					
93	130B0610	BOLT (6x10)	4					
94	21187-2051	ARM ASS'Y	1					
95	92002-2269	BOLT	1					
96	311B0600	NUT (6mm)	1					
97	411B0600	WASHER	1					
98	16171-2051	LINK, governor	1					
99	92081-2299	SPRING, link	1					
100	16169-2077	LINK, choke	1					
101	49113-2058	CONTROL PANEL COMP	1					
102	92037-2020	CLAMP	1					
103	310701-1225A	BOLT	1					
104	314401-5321B	SPRING	1					
105	214B0425	SCREW (4x25)	1					

Ref. No.	Part No.	Part Name	Quantity					Remarks
			A					
106	92081-2316	.SPRING	1					
107	112B0630	BOLT (6x30)	1					
108	112B0655	BOLT (6x55)	1					
109	461F0600A	WASHER, spring	2					
110	311509-3595-00	WASHER	2					
111	92027-2088	COLLAR	1					
112	92027-2089	COLLAR	1					
113	92081-2300	SPRING	1					
114	13042-6003	WEIGHT COMP	1					
115	13107-2088	SHAFT	1					
116	92055-2072	O-RING	1					
117	92015-1193	NUT	4					
118	46102-6003	ROD ASS'Y	2					
119	92141-2090	.BEARING, plain	2					
120	49015-6008	CRANK CASE COVER COMP	1					
121	92141-2091	.BEARING, plane	1					
122	11009-2426	GASKET	1					
123	130T0845	BOLT (8x45)	8					
124	49073-2053	SLINGER, oil	1					
125	13107-2089	SHAFT	1					
126	3145V1-7283A	WASHER	1					
127	187B0512	BOLT (5x12)	1					
128	3145V1-7281A	WASHER	1					
129	92049-2101	SEAL, oil	1					
130	49110-2069	GOVERNOR ASS'Y	1					
131	42036-2060	SLEEVE, governor	1					
132	39003-2063	ARM, pivot	1					
133	410B0600	WASHER	1					
134	554A0600	PIN, snap	1					
135	92022-2135	WASHER	1					
136	92022-2222	WASHER	1					
137	52005-2064	GAUGE, oil	1					
138	59231-2061	FILLER	1					
139	11009-2346	GASKET	1					
140	670D2016	O-RING	1					
141	59071-2070	JOINT	1					
142	92066-2092	PLUG, drain	1					
143	317370-7883-00	GASKET	1					
144	21193-2055	FLYWHEEL ASS'Y	1					
145	21121-2058	COIL, ignition	1					
146	59031-2062	COIL, charging	1					
147	130B0520	BOLT (5x20)	2					

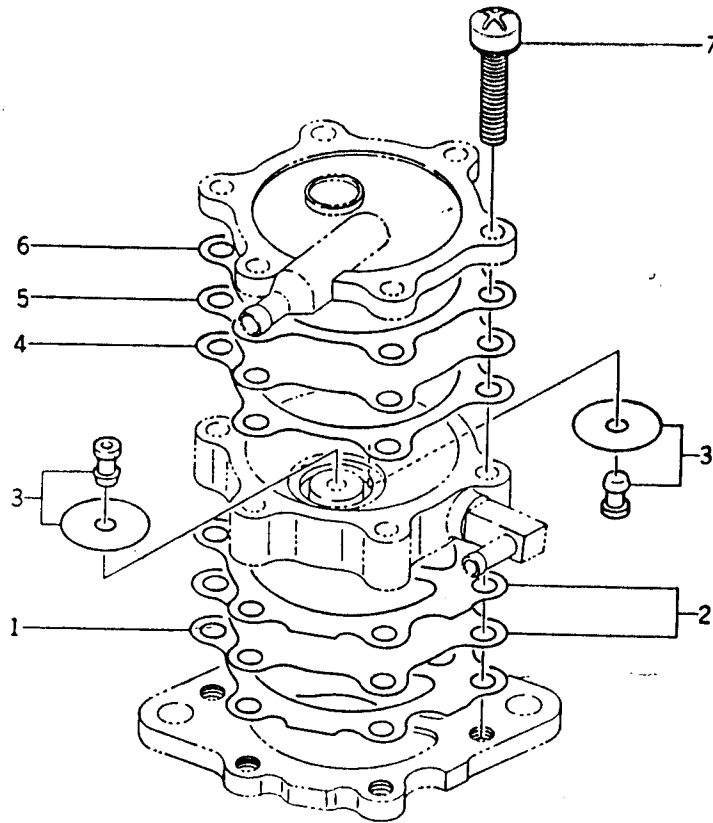
Ref.No.	Part No.	Part Name	Quantity					Remarks
			A					
148	224B0620	SCREW (6x20)	4					
149	21119-2095	IGNITER	1					
150	26011-2104	WIRE, lead	1					
151	233B0408	SCREW (4x8)	1					
152	92037-2177	CLAMP	1					
153	315801-6732A	SCREW	1					
154	92071-2112	GROMMET	1					
155	92071-2099	GROMMET	1					
156	510A5100	KEY	1					
157	314G1600	NUT (16mm)	1					
158	92022-2205	WASHER	1					
159	21066-2004	REGULATOR, voltage	1					
160	92070-2075	PLUG, spark	1					
161	21130-2060	CAP, plug	1					
162	21163-2068	ELECTRIC STARTER ASS'Y	1					Fig. S-1
163	172G0840	STUD	2					
164	92015-1143	NUT	2					

Fig. A-1 AIR CLEANER



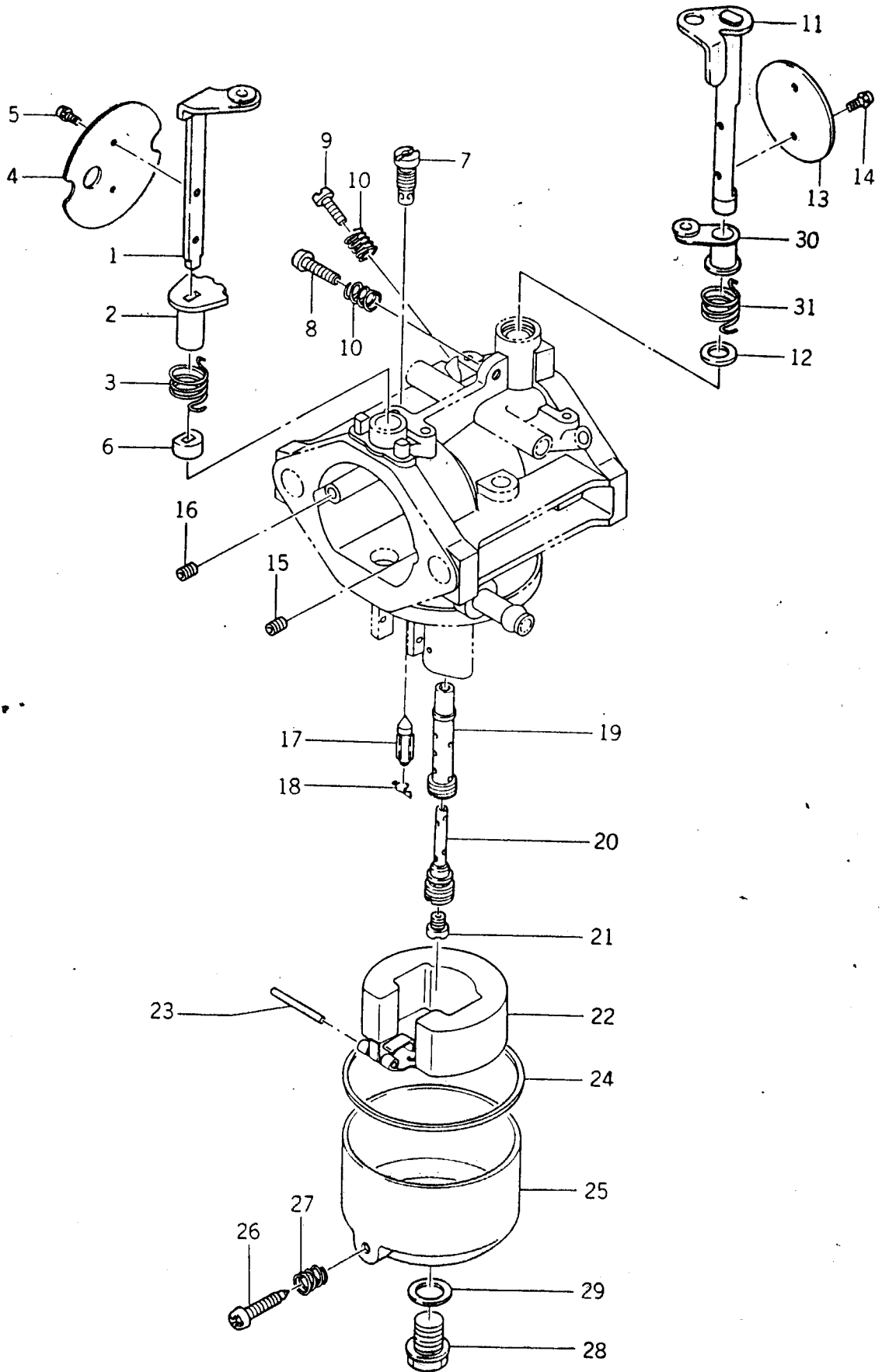
Ref.No.	Part No.	Part Name	Quantity					Remarks
			A					
	11010-2248	AIR FILTER ASS'Y	1					
A-1- 1	11011-2152	•CASE, air filter	1					
A-1- 2	11012-2183	•CAP, air filter	1					
A-1- 3	11013-2092	•ELEMENT	1					
A-1- 4	11013-2093	•ELEMENT	1					

Fig. P-1 FUEL PUMP



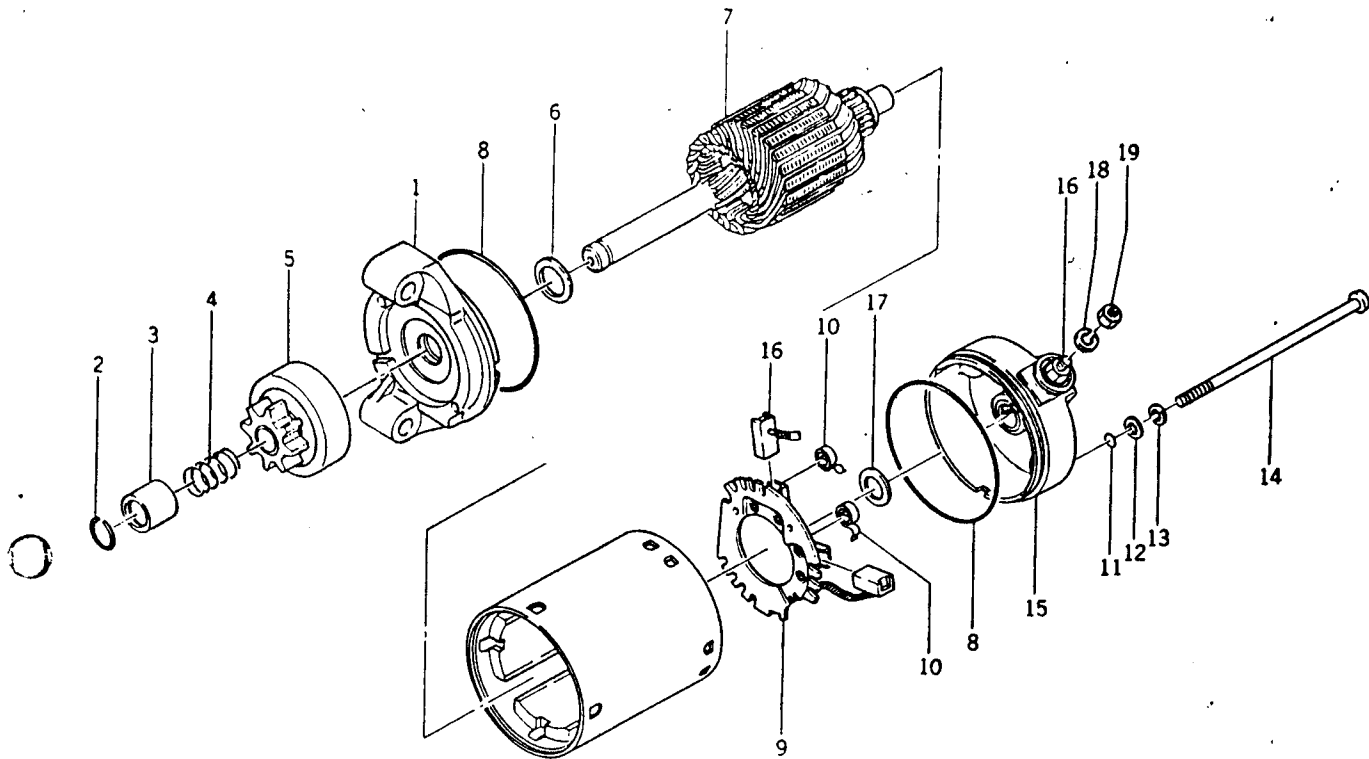
Ref.No.	Part No.	Part Name	Quantity						Remarks
			A						
	49040-2054	FUEL PUMP ASS'Y	1						
P-1- 1	11009-2353	•GASKET	1						
P-1- 2	43028-2052	•DIAPHRAGM	1						
P-1- 3	49116-2051	•VALVE ASS'Y	2						
P-1- 4	11009-2352	•GASKET	1						
P-1- 5	43028-2051	•DIAPHRAGM	1						
P-1- 6	11009-2351	•GASKET	1						
P-1- 7	92009-2212	•SCREW	6						

Fig. C-1 CARBURETOR



Ref.No.	Part No.	Part Name	Quantity					Remarks
			A					
	15001-2402	CARBURETOR ASS'Y	1					
C-1-1	16041-2129	•SHAFT, choke	1					
C-1-2	92027-2087	•COLLAR	1					
C-1-3	92081-2303	•SPRING	1					
C-1-4	16126-2112	•VALVE, choke	1					
C-1-5	314572-6137A	•SCREW	2					
C-1-6	314598-6138A	•RING	1					
C-1-7	313650-6112-00	•JET, pilot (#45)	1					
C-1-8	214B0414	•SCREW (4x14)	1					
C-1-9	16014-2057	•SCREW, adjuster	1					
C-1-10	313122-6116-00	•SPRING	3					
C-1-11	16041-2130	•SHAFT, throttle	1					
C-1-12	316626-6206A	•SEAL	1					
C-1-13	16025-2090	•VALVE, throttle (#110)	1					
C-1-14	316550-6137A	•SCREW	2					
C-1-15	16035-2057	•JET, air (#2.0)	1					
C-1-16	315825-6113A	•JET, pilot air (#1.0)	1					
C-1-17	16030-2067	•VALVE, needle	1					
C-1-18	314595-6134A	•CLIP	1					
C-1-19	49121-2078	•NOZZLE, main (#12B)	1					
C-1-20	49123-2053	•PIPE, bleed	1					
C-1-21	315831-6132A	•JET, main (#100)	1					
C-1-22	315801-6126A	•FLOAT	1					
C-1-23	314499-6127A	•PIN, float	1					
C-1-24	313650-6128-00	•GASKET	1					
C-1-25	315823-6130A	•FLOAT CHAMBER ASS'Y	1					
C-1-26	315470-6133A	•SCREW, drain	1					
C-1-27	313122-6116-00	•SPRING	1					
C-1-28	314486-6143A	•BOLT	1					
C-1-29	318190-6159-00	•WASHER	1					
C-1-30	92027-2025	•COLLAR	1					
C-1-31	92144-2002	•SPRING	1					

Fig. S-1 ELECTRIC STARTER



Ref.No.	Part No.	Part Name	Quantity					Remarks
			A					
	21163-2068	ELECTRIC STARTER ASS'Y	1					
S-1- 1	16146-2079	•COVER ASS'Y	1					
S-1- 2	92033-2076	•RING, snap	1					
S-1- 3	92027-2085	•COLLAR	1					
S-1- 4	92081-2327	•SPRING	1					
S-1- 5	13081-2086	•CLUTCH ASS'Y	1					
S-1- 6	92022-2201	•WASHER	1					
S-1- 7	21080-2055	•ARMATURE	1					
S-1- 8	92055-1260	•O-RING	2					
S-1- 9	14079-2058	•BRUSH HOLDER ASS'Y	1					
S-1-10	21040-1051	••SPRING	1					
S-1-11	92055-1261	•O-RING	2					
S-1-12	92022-1623	•WASHER	2					
S-1-13	92022-1622	•WASHER	2					
S-1-14	92002-2281	•BOLT	2					
S-1-15	16146-2080	•COVER ASS'Y	1					
S-1-16	21039-2057	••BRUSH	1					
S-1-17	92022-2200	•WASHER	1					
S-1-18	461F0500A	•WASHER, spring	1					
S-1-19	92015-2151	•NUT	1					